



AMELIA ISLAND  
CHAMBER

MUSIC  
FESTIVAL 2021

20th  
Season

CELEBRATING  
20 YEARS OF  
MUSICAL  
EXCELLENCE



Midori



Valentina Lisitsa



Zukerman Trio



Balsam Range

Buy Your Tickets Today  
[www.aicmf.com](http://www.aicmf.com) or 904-261-1779



# OUR 2021 SEASON

Dover String Quartet with Cellist Christopher Rex (Virtual)	January 31
New York Philharmonic String Quartet with Pianist Drew Petersen (Virtual)	February 14
Beer & G-Strings - Christiania Trio, Andres Diaz, Elizabeth Pridgen, and Chee Yun	March 14
Zukerman Trio	March 21
Dover Quartet with Edgar Meyer	March 26
Dover Quartet Master Class	March 27
Midori with Pianist Ieva Jokubaviciute	April 9
Valentina Lisitsa	April 18
Scherzando 20th Season Celebration	April 25
JB Scott's Swingin' Allstars featuring Vocalist Lisa Kelly	May 8
Peter and the Wolf, A Family Concert For All Ages	May 22
Balsam Range	May 23

\* Performance venues, programs, dates, and times are subject to change.  
Please visit [www.aicmf.com](http://www.aicmf.com) for the latest information.



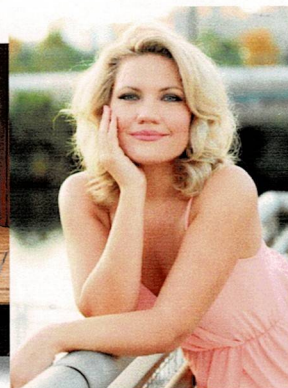
JB Scott's Swingin' Allstars



Elizabeth Pridgen



New York Philharmonic  
String Quartet



Julie Coucheron



## *To Our Friends and All Music Lovers*

---

Join us as we celebrate Amelia Island Chamber Music Festival's 20th season. The Festival has been presenting the world's greatest artists and providing music education for promising young students since our founding in 2001. It is exciting to present this season with both social distancing and online concerts because the pandemic has taught us, in the performing arts, how indispensable the audience is. The composer writes his music, and we spend our lives learning how to bring the music to life, but without people to express it to, we have no mission.

A wide array of internationally recognized award-winning superstars from multiple genres include Festival new-comers violin virtuoso, Midori, and the New York Philharmonic String Quartet with Drew Petersen. Returning favorites include Pinchas Zukerman with the Zukerman Trio, charismatic pianist Valentina Lisitsa, and concert violinists Robert McDuffie and Chee Yun Kim. Hosting these artists reflects our growing status as one of the nation's premier classical music festivals.

The ability to bring to Amelia Island the greatest musical artists in the world has only been possible through the exceptional generosity of our individual and corporate sponsors, the dedication of our Board of Directors, volunteers, and staff, and the enthusiastic support of our audiences. I am so grateful for all who have worked so hard to present this fantastic 20th season celebration safely and responsibly during these challenging times.

Welcome to our 20th season, which promises to be the best yet!

Sincerely,  
Christopher Rex  
General and Artistic Director





## 2021 *Ticketing Specials*

Performance venues, programs, dates and times are subject to change.

Please visit [www.aicmf.com](http://www.aicmf.com) for the latest information.

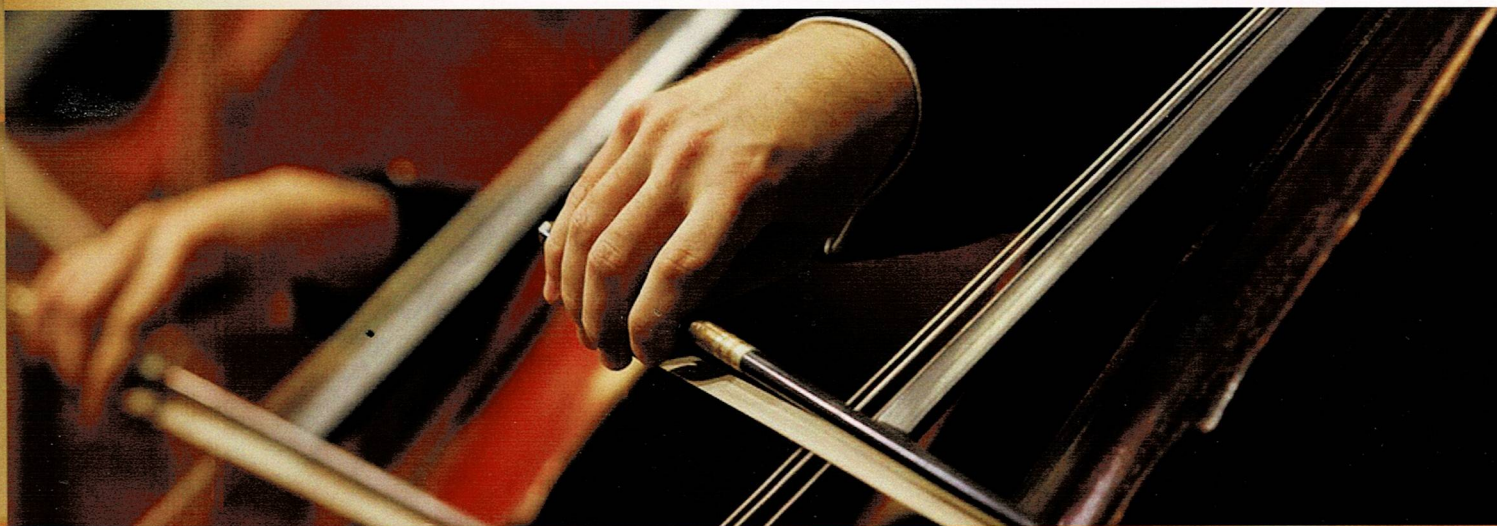
Tickets for all concerts are available online or by calling 904-261-1779.



Subject to availability, student tickets for all concerts can be purchased 30 minutes prior to a performance for \$10 with a valid student ID and proof of age under 25. Tickets are also available through the Student/Teacher/Parent Complimentary Ticket Program. If a concert is not sold out a week before the performance date, up to four complimentary tickets are available for a music student, the teacher, and parents. In addition, visitors to Amelia Island will receive a 50% discount on all Festival tickets by presenting a valid confirmation number from any lodging establishment on the island. All of these discounts, which cannot be combined, are available through the Festival office at 904-261-1779.

## *Support Your Festival*

The Amelia Island Chamber Music Festival has been presenting the world's greatest artists and providing music education for promising young students since our founding in 2001. We have been able to do this thanks to your generous financial support. The largest support of our annual budget comes from individual donors and corporate sponsors like you. Visit us at [www.aicmf.com](http://www.aicmf.com) to learn about the many benefits that are available to you by contributing at our various donor levels. In addition, we are a volunteer-driven organization, and you can support us by putting your skills to work as a Festival volunteer. Our website provides complete information on volunteer opportunities and how you can sign up.





## *Dover String Quartet with Cellist Christopher Rex*

Sunday, January 31 (Virtual)

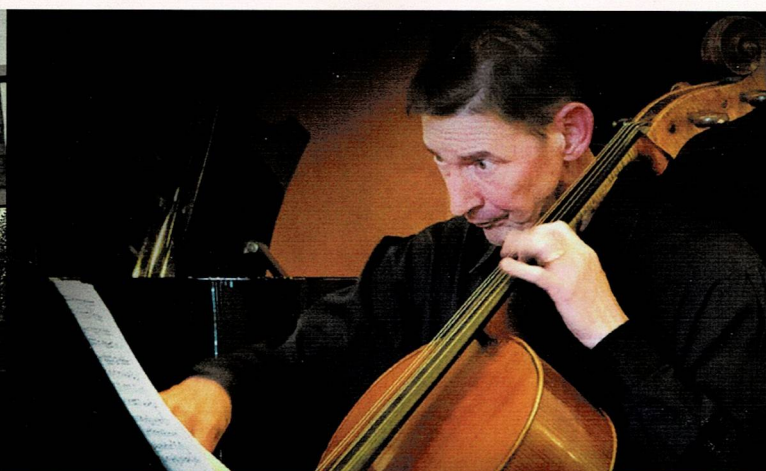
Program:

Shostakovich String Quartet No. 8 in C Minor

Schubert C Major Cello Quintet

The Dover String Quartet, AICMF's quartet-in-residence, is one of the most in-demand ensembles in the world. The first ever quartet-in-residence for the Kennedy Center and the recipient of the coveted Avery Fisher Career Grant, the Dover is also quartet-in-residence for the prestigious Curtis Institute of Music in Philadelphia, the Bienen School of Music at Northwestern University, and Artosphere. The Quartet's distinctive sound has helped confirm its status as one of the finest young American string quartets of their generation.

The Quartet will be joined by cellist Christopher Rex, founder and Artistic and General Director of the Amelia Island Chamber Music Festival. He retired as principal cellist of the Atlanta Symphony Orchestra in 2018 after serving in that position for 39 years.







# LIKE THE KEYS OF A PIANO

INDIVIDUAL IN PITCH. UNITED IN PURPOSE.

First Federal Bank is proud to support  
the Amelia Island Chamber Music Festival.

---

**904-321-0400 | [ffbf.com](http://ffbf.com)**

Fernandina Beach • Wildlight • Yulee



## FIRST FEDERAL BANK

Newsweek's Best Small Bank in Florida





## *New York Philharmonic String Quartet with Pianist Drew Petersen*

**Sunday, February 14 (Virtual)**

**Program:**

**Mendelssohn String Quartet No.2 in A Minor**

**Schumann Piano Quintet in E-flat Major**

The New York Philharmonic String Quartet is comprised of four Principal musicians from the Orchestra. The group, formed in January 2017, made its debut as the solo ensemble in John Adams's *Absolute Jest* in New York in March 2017. All four members are multiple prize winners, have appeared as concerto soloists with the Philharmonic and orchestras around the world, and have appeared frequently in the Philharmonic's chamber music series at David Geffen Hall and Merkin Hall.

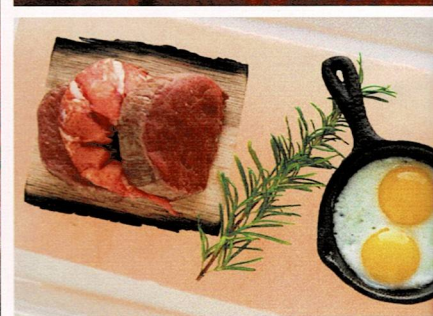
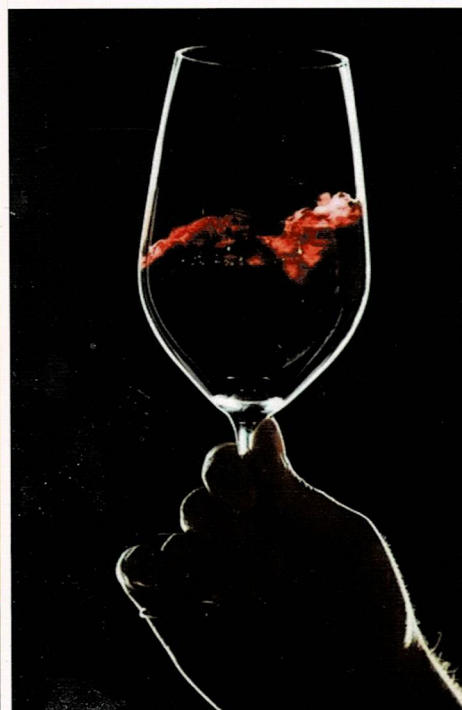
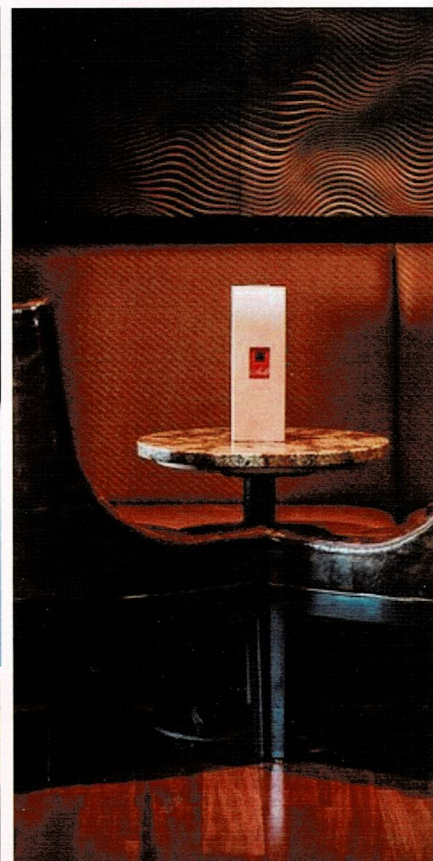
Acclaimed young American pianist Drew Petersen is a sought-after soloist, recitalist, and chamber musician in the United States, Europe, and Asia. He's been praised for his commanding and poetic performances of repertoire ranging from Bach to Zaimont and is the recipient of the 2018 Avery Fisher Career Grant, 2017 American Pianists Award, and the Christel DeHaan Fellow of the American Pianists Association, as well as a residency at the University of Indianapolis.





LET  
US  
STAY  
WITH  
YOU.®

A world-renowned restaurant with a local address.



Make every occasion special with an unforgettable dining experience at Salt, a Five-Diamond AAA-rated restaurant. Explore classic flavors from our seasonal menu or tempt your palate with the unique Chef's Adventure Menu. Selected by Forbes Magazine as a *Top Chef's Table* in America, Salt restaurant welcomes local residents and resort guests.

For reservations or to plan an event, please call 904-277-1087.

For dining reservations, private events, and additional information, please visit [ritzcarlton.com/ameliaisland](http://ritzcarlton.com/ameliaisland).



**THE RITZ-CARLTON**

AMELIA ISLAND



## *Beer & G-Strings*

Sunday, March 14

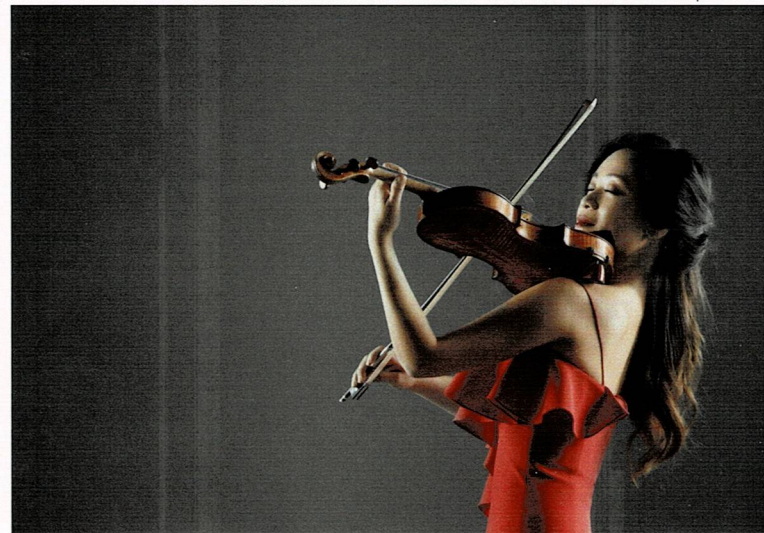
Venue: Sadler Ranch

Program:

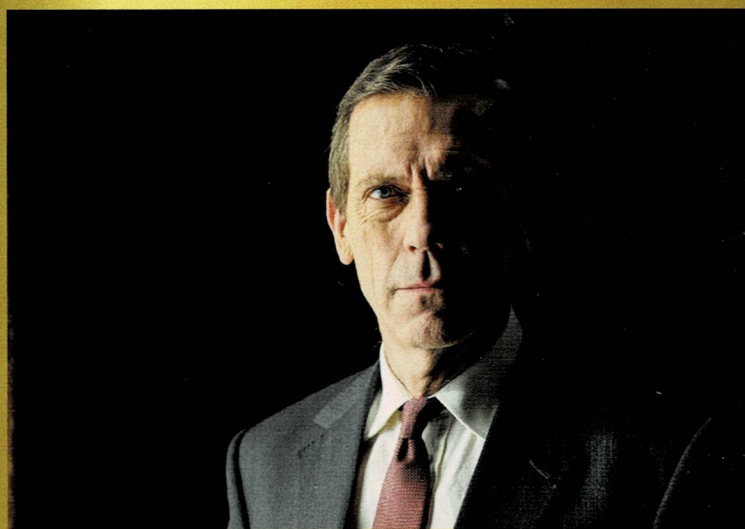
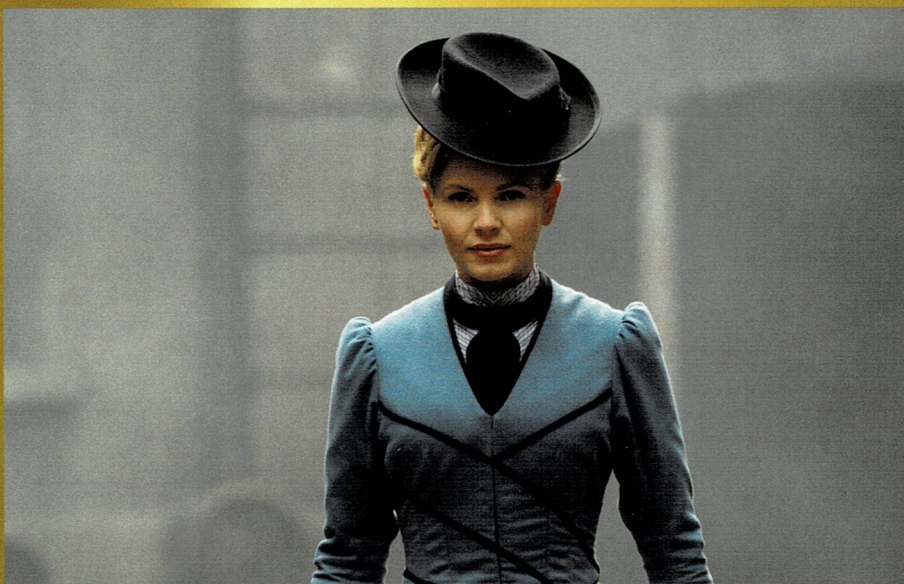
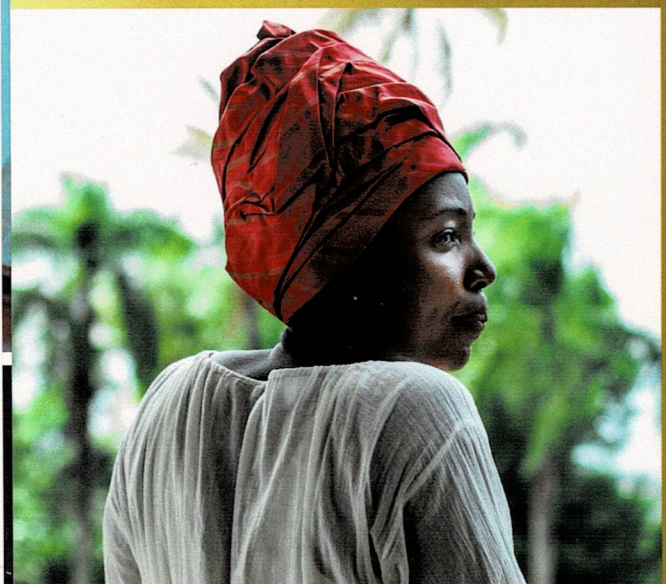
Piazzolla Tangos "Spring" and "Autumn" from Four Seasons of Buenos Aires

Vivaldi Concertos "Summer" and "Winter"

A collaborative concert, Beer and G-Strings brings festival favorites the Christiana Trio, Andres Diaz, Elizabeth Pridgen, and Chee Yun together for an exciting afternoon of string classics.







# MASTERPIECE

BRINGING YOU THE MOST CAPTIVATING DRAMAS  
SUNDAY EVENINGS ON WJCT-TV 7.1 (COMCAST 440)

**wjct**



## *Zukerman Trio in Concert*

Sunday, March 21

Venue: First Baptist Church

Program:

Beethoven Kakadu Variations

Arensky Trio No.1 in D Minor

Brahms Trio in C Major

With a celebrated career spanning five decades, Pinchas Zukerman reigns as one of today's most sought-after and versatile musicians as a violin and viola soloist, conductor, and chamber musician. He launched his trio in 2013 and since then the ensemble has traveled around the globe and performed at such major festivals as Ravinia, the BBC Proms, Edinburgh, Verbier, and Bravo! Vail.





WE MUST FEED THE IMAGINATION, TRUST THE  
CURIOSITY OF CHILDREN AND YOUTH ~MARGARET MEAD



## FINE ARTS ON AMELIA ISLAND

AMELIAMUSICSTUDIO.COM  
AMELIAARTSTUDIO.COM



## *Dover String Quartet with Bassist Edgar Meyer*

**Friday, March 26**

Venue: Amelia Baptist Church

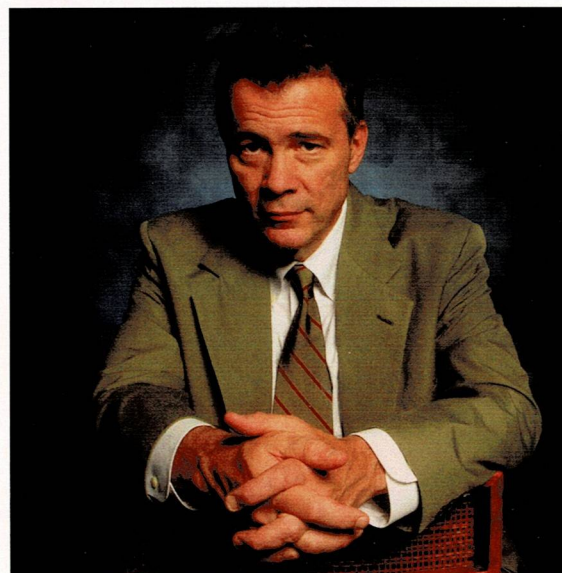
Program:

Edgar Meyer String Quintet

Duke Ellington Fantasy by Paul Chihara

The Dover String Quartet, AICMF's quartet-in-residence, is one of the most in-demand ensembles in the world. The first ever quartet-in-residence for the Kennedy Center and the recipient of the coveted Avery Fisher Career Grant, the Dover is also quartet-in-residence for the prestigious Curtis Institute of Music in Philadelphia, the Bienen School of Music at Northwestern University, and Artosphere. The Quartet's distinctive sound has helped confirm its status as one of the finest young American string quartets of their generation. The Quartet will be joined by acclaimed composer and performer, Edgar Meyer, bassist, on March 26.

In demand as both a performer and a composer, Edgar Meyer has formed a role in the music world unlike any other. Hailed by *The New Yorker* as, "...the most remarkable virtuoso in the relatively unchronicled history of his instrument." Mr. Meyer's unparalleled technique and musicianship in combination with his gift for composition have brought him to the fore, where he is appreciated by a vast, varied audience. His uniqueness in the field was recognized by a MacArthur Award in 2002. Mr. Meyer's past collaborations include many festival favorites such as Joshua Bell, Béla Fleck, Yo-Yo Ma, and Chris Thile.



## *Dover Quartet Master Class*

**Saturday, March 27**

Venue: Prince of Peace Lutheran Church





# STAY A PART OF **ADVENTURE**

---

Whatever you're a part of.  
Stay that way.

OMNI  RESORTS  
amelia island | florida

[OMNIHOTELS.COM/AMELIAISLAND](http://OMNIHOTELS.COM/AMELIAISLAND)





## *Midori* *with Pianist Ieva Jokubaviciute*

**Friday, April 9**

Venue: First Baptist Church

Program:

Claude Debussy-Violin Sonata in  
G Minor, L. 140

Wolfgang Amadeus Mozart-Violin  
Sonata No. 24 in F Major

Cesar Franck-Violin Sonata in A Major

**Pianist: Ieva Jokubaviciute**

A visionary artist, activist and educator, Midori has had a unique career which transcends traditional boundaries through her relentless drive to explore and build connections between music and the human experience. A leading concert violinist for over 35 years, Midori regularly transfixes audiences around the world, bringing together graceful precision and intimate expression that allows the listening public to not just hear music but to be personally moved by it.



### *Pianist: Ieva Jokubaviciute*

Lithuanian pianist Ieva Jokubaviciute's powerfully and intricately crafted performances have earned her critical acclaim throughout North America and Europe. In 2016, Ieva began a collaboration with the violinist Midori, with recitals in Canada, at the Cartagena International Music Festival in Columbia, and in Germany and Austria. They have since given recitals in Japan, Poland, Peru, Columbia, Mexico, India, and Sri Lanka.



*Every house  
seeks a story  
to fill it with  
the memories  
of a well played  
Song*

*The Song of  
Life and Living  
melting in to  
One*

*One ever cherished  
One ever born  
One just for you  
The One you call  
Home*



**BERKSHIRE  
HATHAWAY**  
HomeServices

Chaplin Williams Realty

ChaplinWilliams.com



Every home seeks a story. Every song needs a home.

Let us help you find Yours.

904-261-9311

*A proud supporter of the Arts in Nassau County*



## *Valentina Lisitsa*

Sunday, April 18

Venue: Omni Amelia Island Resort

Program:

Beethoven-Liszt Symphony #3 Eroica

Chopin Scherzo #4 E major op 54

Rachmaninoff-

Variations on theme by Corelli op 42

Liszt Spanish Rhapsody

With more than 83 million YouTube views, piano virtuoso Valentina Lisitsa is one of the most watched classical musicians on the internet. An Amelia Island favorite, Valentina is at ease with a vast repertoire, ranging from Bach and Mozart to Rachmaninoff, Shostakovich and Bernstein. Her orchestral repertoire includes more than 40 concertos.





# CANCER TREATMENT SHOULDN'T FEEL *LIKE A SOLO*



**Ackerman Cancer Center provides whole-patient care, right here on the island.**

Turn to the team that treats cancer personally. Our center is at the forefront of cancer treatment technology that preserves a brighter quality of life during and after cancer treatment. Less travel time and fewer side effects give you more time to enjoy life — and music, of course.



**ACKERMAN**  
Cancer Center

**Whole-Patient Cancer Care + Proton Therapy**

Amelia Island I (904) 447-1660

**AckermanCancerCenter.com**



- Cosmetic Tooth Whitening
- Gentle Cleanings
- Oral Surgery
- Dental Bonding & Fillings
- Ceramic Crowns
- Sedation
- Porcelain Veneers
- Periodontal Therapy
- Dental Implants
- Root Canals
- Digital Impressions
- Laser Periodontal Therapy & LANAP- Periodontal



Steven A. Garrett, DMD   Laurie A. Kitson, DMD   Jennifer L. Mokris, DMD   Joshua O. Bietenholz, DMD

**AMELIA DENTAL GROUP**  
COMPREHENSIVE DENTISTRY

*Creating Vibrant Smiles for Healthy Lifestyles!*

**904.261.7181**

Call **today** for your comprehensive evaluation!

[www.ameliadental.com](http://www.ameliadental.com)

1947 Citrona Drive | Fernandina Beach, FL 32034 | 904.261.7181



# *Scherzando 20th Season Celebration*

## Sunday, April 25

Venue: Ritz-Carlton, Amelia Island

Program:

Beethoven Scherzo from Piano Trio Op. 1, No. 1

Brahms Scherzo from the Sonatensatz in C minor, Op. posth., "FAE Sonata"

Schubert Scherzo from the 2 Cello Quintet

Wieniawski Scherzo Tarantelle

Rachmaninoff Allegro Scherzando from the Cello Sonata in G Minor

Beethoven Scherzo Mvt. III from String Quartet Op, 95

Scherzo and Finale from Mendelssohn Octet in E-flat Major



To celebrate the 20th season of the Festival and to pay tribute to the memory of renowned cellist and beloved festival favorite, Lynn Harrell, a collaborative concert entitled "Scherzando" will be presented at the Ritz-Carlton on Sunday, April 25. This concert will feature stars from the Festival's 20 successful seasons and friends and colleagues of Harrell. Artists will include violinists **Robert McDuffie**, **Amy Moretti**, **Helen Nightengale**, and **Giora Schmidt**, violists **James Dunham** and **Suzanne LeFevre**, cellists **Zuill Bailey** and **Christopher Rex**, and pianist **Elizabeth Pridgen**. They will perform virtuoso works of Beethoven, Brahms, Wieniawski, Schubert, and end with the Scherzo and Finale of Felix Mendelssohn's great Octet.







# Looking to Reduce **YOUR ENERGY BILL?**

Save money *and* make your home more efficient with a **FREE** Home Energy Check-Up.



Schedule yours.  
**Contact FPU Today!**



Ask how you can get up to a \$100  
air conditioning or heating rebate.

**FLORIDA PUBLIC**  
UTILITIES

[FPUC.com/FreeCheckup](http://FPUC.com/FreeCheckup) | 800.427.7712

PROMO: NA19-173 092319



# *JB Scott's Swingin' Allstars* *featuring Vocalist Lisa Kelly*

**Saturday, May 8**

Venue: TBA

Program:

Jazz Classics from the traditions of Louis Armstrong, Ella Fitzgerald, Billie Holiday, Peggy Lee, Clark Terry, Lee Wiley, Ruby Braff, Eddie Condon, Trummy Young, and Kenny Davern.

This top-shelf group of pros is dedicated to playing Chicago Swing /New Orleans style Jazz in a highly entertaining, musically spirited fashion. This group is led by the flamboyant, virtuoso trumpeter,

JB Scott, former musical director of the world-famous Dukes of Dixieland. Featured is award-winning vocalist Lisa Kelly, well-known for her rich, smooth tone and swinging delivery of lyrics and the unique storytelling vocal styling of versatile banjo/guitarist Ken Calhoun. Rounding out the 'allstar' cast are legendary musicians Dave Steinmeyer, former trombonist and bandleader of the renowned Air Force Airmen of Note, multi-instrumentalist Bill Prince on clarinet and sax, who played with Buddy Rich, the Billy Maxted band, and many others, Walt Disney World bassist Jay Mueller, and former drummer with the USMC Band of New Orleans, Jeremy Smith.



The band has a broad, versatile repertoire that includes tributes to the classics from the 1920s, 1930s, and 1940's to well-penned original songs from the style of Louis Armstrong's Allstars New Orleans Traditional, Chicago Style, and even a bit of Big Band Swing. There are also influences that include Clark Terry, Ruby Braff, Ella Fitzgerald, Billie Holiday, Lee Wiley, Peggy Lee, Eddie Condon, Trummy Young, and Kenny Davern. Long-time fan Bill Harding says, "JBSSA's is a real wealth of experienced, creative musicianship in one fantastically entertaining group!" To quote Brian Harvey, The Hot Jazz Channel, "Lisa's Her 'Ella' like scat is really impressive. JB's versatile style enables him to swing like crazy! This is a highly entertaining exciting band that can please a wide variety of audiences."





# Spartina 449

## Designer Handbags

Brahmin • Lisi Lerch • Traveleon • Vera Bradley  
Rioni • Hammitt • Consuela • Hobo • Sonda Roberts  
Michael Kors • Spartina 449 • Queork

## Designer Jewelry

Mariana • Firefly • Brighton • Jayden Star  
Holly Yashi • Connie Bennett • Kristina Collection



HANDBAGS • HATS • SCARVES • JEWELRY  
GIFTS FOR WOMEN AND CHILDREN

**Bring in your hotel key to receive  
10% OFF any full priced item.**

**114 Centre St., Fernandina Beach • 904-261-6993 | Mo-Sa 10-5 • Su 11:30 - 4:30**



Look for our in-store specials found only on Facebook.



In travel, it's all who you know,  
let Wallace Pierson Travel  
introduce you!



How excited are you, now that it is 2021?

If you are ready for life enriching, unique travel opportunities, our friends around the country and the globe are ready to welcome you.

From private access to museums or theatres, to dining with a diplomat, or behind the scenes animal experiences, we are ready to share this wonderful world with you, Wallace Pierson Travel style.

Mention code "AICM2021" at time of booking and WPT will donate \$25 to the Amelia Island Chamber Music Festival

wallacepierson.com | 904.261.5914 | info@wallacepierson.com



# Peter And The Wolf

Saturday, May 22

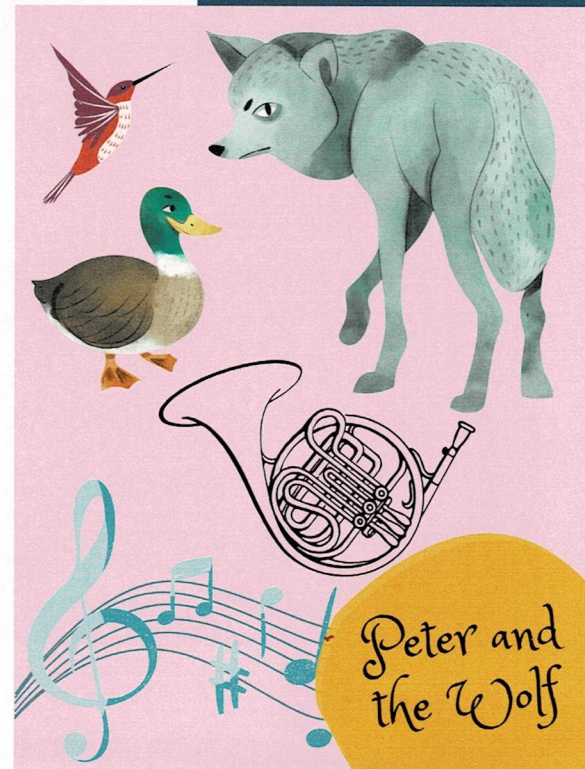
Venue: Amelia Community Theater

Program:

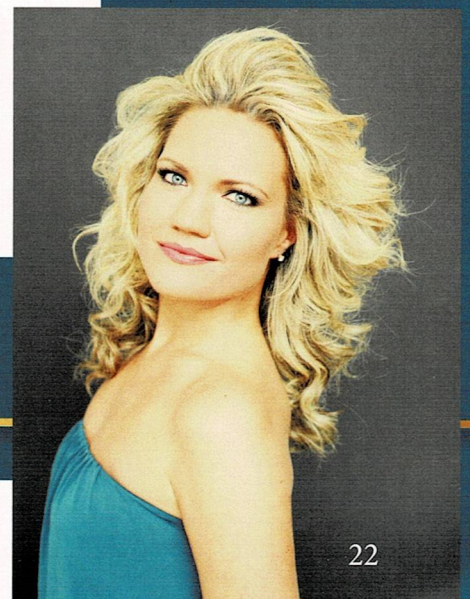
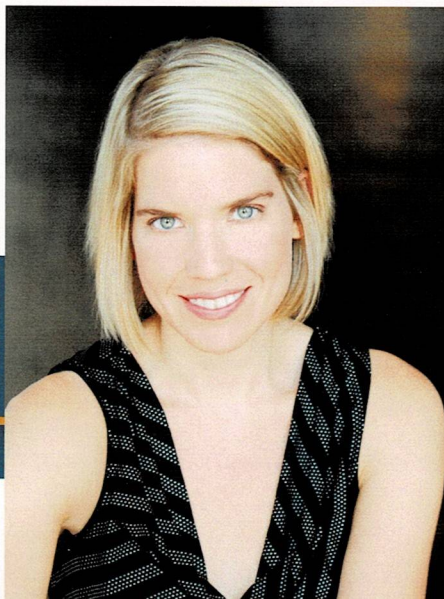
“Peter and the Wolf”- A Family Concert For All Ages  
by Russian composer Sergei Prokofiev

Enjoy a children's theatre composition based on the Russian folk tale by composer Sergei Prokofiev. Pianists Julie Coucheron and Elizabeth Pridgen will perform a four-hand version of the iconic composition, along with dancers from the Amelia Island Dance Festival, under the direction of Susan Dodge, and narrated by Frank O'Donnell. The Family Concerts are developed in association with the AICMF Young Patrons Group.

**Julie Coucheron** is an award-winning pianist who tours internationally. Pianist **Elizabeth Pridgen** is a distinguished soloist and chamber musician who is a director of the Atlanta Chamber Players. A noted choreographer and professional dancer, **Susan Dodge** was formerly a member of the Paul Taylor Dance Company. She has taught at universities and conservatories across the nation. **Frank O'Donnell** is a familiar figure at Amelia Community Theater where he is best known for his iconic roles including Atticus Finch in To Kill a Mockingbird and as Scrooge in Scrooge! The Musical.



*Performances at 11 a.m. and 2 p.m.*  
*Tickets: Children \$5 and Adults \$15*





*Where there's always something happening!*



**Celebrating the Arts:**  
Literary. Culinary. Performing.  
Visual. Creative.

*Visit [StoryandSongBookstore.com](http://StoryandSongBookstore.com)  
for details.*

1430 Park Avenue • (904) 601-2118

EXPERIENCE  
*Style*

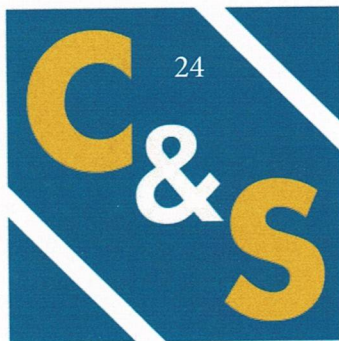


**LOTT'S FURNITURE**

= EST. 1947 =

2110 Sadler Square | Fernandina Beach, FL | 904.261.6333  
401 Mary Street | Waycross, GA | 912.283.6350

[lottsfurniture.com](http://lottsfurniture.com)



**COURSON  
& STAM, LLC**

CERTIFIED PUBLIC ACCOUNTANTS

**Accounting, Small Business Services  
and Tax Preparation**

**Pierre Laporte, CPA**

**Lindsay Corigliano, CPA**

(904) 261-7803 • Fax: (904) 261-1011  
2398 Sadler Rd., Fernandina Beach, FL 32034



## *Balsam Range*

Sunday, May 23

Venue: Sadler Ranch

Program:

Selections from traditional old-school bluegrass to those of contemporary newgrass.

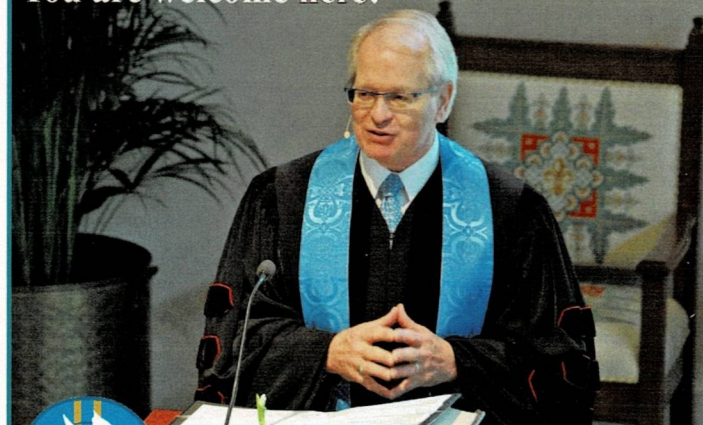
The 2018 International Bluegrass Music Association's Entertainer of the Year, Balsam Range, has become one of the genre's most award-winning acts. Since forming in 2007, the group has garnered 13 IBMA awards on the heels of eight critically-acclaimed albums. Balsam Range has left audiences spellbound while headlining major festivals from coast-to-coast, selling out venues across the nation and in multiple appearances at the Grand Ole Opry.





jw  
Frame  
Gallery

You are welcome here!



Amelia  
Plantation  
Chapel

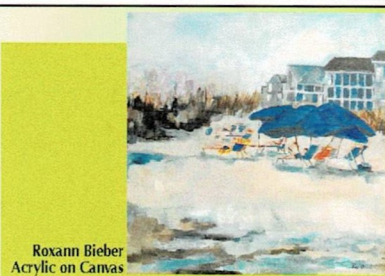
An Interdenominational Community Church

Sunday Worship Services  
at 9:15am and 11:15am  
36 Bowman Road  
904.277.4414  
[www.ameliachapel.com](http://www.ameliachapel.com)



Custom Framing · Fine Art

jw  
Frame  
Gallery



Roxann Bieber  
Acrylic on Canvas

Monday - Friday 10am-5pm • Closed Saturday & Sunday  
1875-B S. 14th St • 904-310-6610 • [jwframegallery.com](http://jwframegallery.com)

# Your one-stop shop.

| Digital printing & copying |

Document finishing | Packing & Shipping Services

| Mailbox services Notary services | Fax services and more|

1417 Sadler Road  
Fernandina Beach, FL 32034  
904.277.0820. Tel.  
904.277.0890 Fax

Copyright 2014 The UPS Store

# The UPS Store™



## *Music Education and Special Programs*

Beginning with our inaugural year, the Amelia Island Chamber Music Festival knew the importance of music education. Master Classes and tutoring for our Young Resident Artists program played an important role in our first concert season. Now in our 20th season, this program has not only thrived, but has continued and expanded to become The Spring Institute. Here, the Beth Newdome Fellowship Artists, promising and acclaimed students from the nation's leading conservatories and universities, are mentored by professional musicians and our quartet-in-residence, The Dover Quartet. This training program culminates in a series of public performances, most of which are free of charge.

Committed to education, we know students and audiences benefit and learn from attending Master Classes. Therefore, while here to perform one of their concerts, the Dover Quartet will conduct a free master class for young artists who are currently attending Jacksonville area schools and universities. Attendance by all who love to listen and learn is encouraged. Partnering with the Boys and Girls Clubs of Nassau County, we have developed a Strings Education Program. The Amelia Island Chamber Music Festival provides instruments and lessons for a five-day-a-week learning experience. Student recitals, as well as performances by professional musicians have been presented at the Miller Freedom Center and the Roberts Learning and Achievement Center. These programs will resume when the current COVID-19 restrictions are lifted.

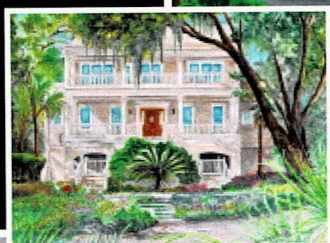
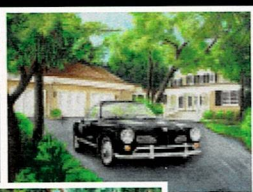




## Fine Arts House Portraits

by *Lorraine King*

Preserve Your Memories  
in a Beautiful and  
Unique Way

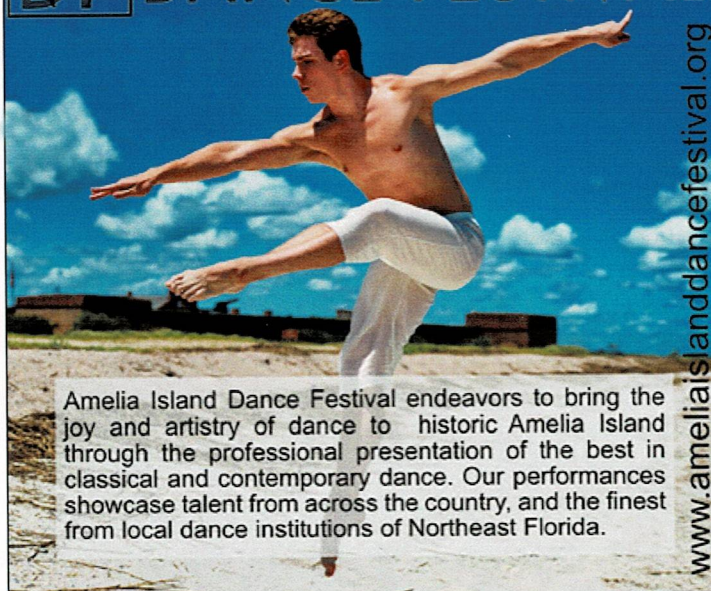


Homes, Boats, Car,  
Campers/Airstream,  
Vacation locations, Gift,  
Whatever has meaning

**904-491-3737**

loraineking.com • loraine@loraineking.com

## AMELIA ISLAND DANCE FESTIVAL



Amelia Island Dance Festival endeavors to bring the joy and artistry of dance to historic Amelia Island through the professional presentation of the best in classical and contemporary dance. Our performances showcase talent from across the country, and the finest from local dance institutions of Northeast Florida.

www.ameliaislanddancefestival.org

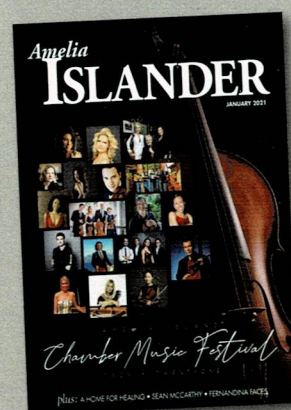
The Amelia Island Chamber Music Festival greatly appreciates the support of our advertisers and we hope you will support them as well! Be sure to mention that you saw their ad here.

Keep up with

Everything Amelia

with the

*Amelia Islander*  
Magazine



Visit us online at

**ameliaislander.com**

## Your Hometown Newspaper



Serving All  
of Nassau County

904-261-3696 • www.fbnewsleader.com



Restaurant & Tapas

Traditional Flavors from  
Spain & Portugal

(904) 261-7700 • 22 S. 4th Street  
Historic Downtown Fernandina Beach  
www.espanadowntown.com

Kurt Marasco  
Principal  
(904) 447-4567  
kurt@technuity.org

**TECHNUITY**.org

IT Consulting and Services

**Relax. We've got it.**



## IVINS INK STUDIO

ART DIRECTION  
ILLUSTRATION / CARTOONING  
GRAPHIC DESIGN  
STAGE DIRECTING  
ACOUSTIC MUSIC

WILLIAM P. IVINS

Fernandina Beach, Florida

412-606-4484 | bill@ivinsink.com | www.ivinsink.com





## *Young Patrons: Join the party!*



From left: Trang Wiest, Ktimene Axetell, Lauren Templeton, Jennifer Dauer, missing is Carrie Mays.

Dynamic young adults, 21 to 50, who love music and desire to mingle and network may enjoy discounted tickets to concerts. This all-inclusive ticket includes a pre- or post-concert party. A group of local women, pictured here, launched this program as a result of a cocktail party they hosted preceding the popular Winton Marsalis concert.

The Young Patrons have planned an exciting 2021 kick-off of Peter and the Wolf, a family concert for all ages, Saturday, May 22 at the Amelia Community Theatre. Membership in the Young Patrons Group is **Free!** For more information or to join the group, visit [www.aicmf.com](http://www.aicmf.com) or call 904 261-1779



**BRADDOCK METALLURGICAL**  
**Quality Metal Treating Since 1953**

LOCATED IN

Daytona Beach, FL • Atlanta, GA • Riverview, FL • Bridgewater, NJ

Jacksonville, FL • Boynton Beach, FL • Charlotte, NC • Bayamon, Puerto Rico

*"In Memory of Steve Braddock" removed.*



Whether you are a professional or a beginner.  
All roads lead to Keyboard Connection  
your official Yamaha Piano Dealer!



*To purchase the piano of your dreams visit  
Keyboard Connection today!*

9912 San Jose Boulevard, Jacksonville, FL  
Pianosjax.com • 880-0002

disklavier *Clavinova*







PURCELL • FLANAGAN • HAY • GREENE

FAMILY BUSINESS WEALTH

*Attorneys and Counselors*

## PRACTICE AREAS

Asset Protection  
Business Planning and Transactions  
Charitable Planning  
Commercial Litigation and Business Dispute Resolution  
Elder Law  
Estate, Trust and Guardianship Administration  
Estate and Multi-Generational Family Planning  
Will Contests, Trust and Guardianship Litigation  
Real Estate  
Tax Controversy and Litigation  
Tax Planning

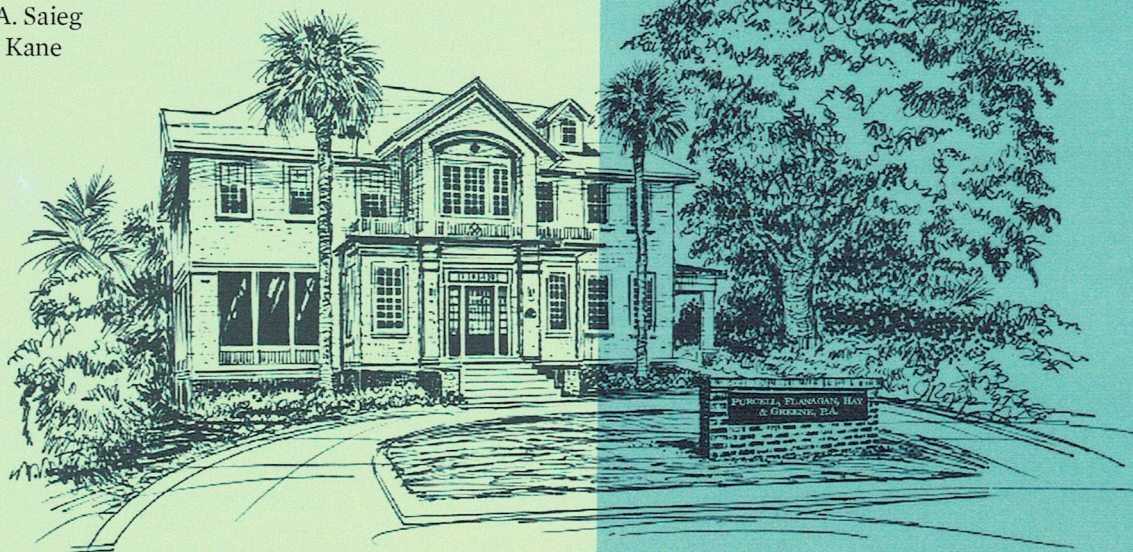
## SHAREHOLDERS

Timothy L. Flanagan  
Jonathan L. Hay  
Christopher J. Greene  
John I. Fishburne III  
Robert H. Trudeau  
Brian J. Hershorin  
Julie A. Saieg  
Kevin Kane

## ASSOCIATES

Linda R. Wicker  
Lyudmyla Kolyesnik  
Kyle M. Johnson  
Devon S. Richards  
Kristine M. Scott

PROVIDING CLARITY,  
EARNING TRUST, AND  
ADDING VALUE



AMELIA ISLAND | JACKSONVILLE | PONTE VEDRA BEACH  
(904) 355-0355 | [WWW.PFHGLAW.COM](http://WWW.PFHGLAW.COM)



# Sponsors & Contributors

The Amelia Island Chamber Music Festival. gratefully acknowledges our many contributors for their financial support. Without you, our Festival would not exist, and we sincerely thank you for your support. The following list presents contributions and pledges made from August 1, 2019, through December 4, 2020. Every effort has been made to ensure accuracy. If we have limited or incorrectly listed a name, we sincerely apologize and ask that you notify us at 904-261-1779 or email us for correction.

## Corporate Sponsors

Amelia Island Tourist Development Council  
Arts and Culture Nassau  
First Federal Bank  
Florida Public Utilities  
Keyboard Connection- Jack Melvin  
National Endowment for the Arts  
Omni Amelia Island Plantation Resort  
Rayonier Advanced Materials Foundation  
Rayonier, Inc.  
Ritz-Carlton Amelia Island  
State of Florida, Division of Cultural Affairs and the Florida Arts Council  
WestRock  
WJCT Public Broadcasting

## Hope Nautilus - \$20,000 +

Patricia Clegg  
Barbara Alleva Gant and Donald R. Gant  
Jack and Sandy Halsey – The Halsey Family Foundation

## Diamond Nautilus - \$10,000 +

Henry Berghoef and Leslie Lauer Berghoef  
Paul and Kathy Bosland  
Sue Braddock  
Allen and Sharon Lennon  
Tom and Jeanette Pippin  
Eric and Gail Sakurai

## Platinum Nautilus - \$5,000-\$9,999

Ron and Dorothy Cheeley  
Michel and Lyn Deroy  
Jacqueline Dorrance-Tomlinson  
Jim and Jane Flynn  
Bob and Pat Henderson  
Sally Henderson  
Bill Hensley and Anne Taylor Hensley  
Jack and Bev Keigwin  
Judy and Scott McCue – and the Judy and Scott McCue Fund at  
The Chicago Community Foundation  
Rebecca Stafford  
Bob and Pat Stichweh

## Gold Nautilus-\$2,500-\$4,999

Bob and Robin Bolan  
William and Shelia Braddock  
Richard and Jeanne Conner  
Paul and Ann Glendon  
Phil and Claudia Koerner  
Bob and Jane Lindberg  
Jack and Diane Lord  
Peter and Jackie Martin  
Donald McCurry and Suzanne Keith  
Michel and Heidja Kruse  
Christopher Rex and Dr. Martha Wilkins  
Bud and Elizabeth Tanis  
Tom and Vicki Whittemore  
Richard Williams and Carole Thoele-Williams  
Leewood Woodel

## Silver Nautilus-\$1,000-\$2,499

Dr. Scot and Alexandra Ackerman-The Ackerman Cancer Center  
Cathy Adams  
Cary and Karen Blair  
Francesco and Amanda Borghese  
William and Sheila Braddock  
Peter and Merrilee Chamberlain  
Henry and Carolyn Conway  
Jack and Margaret Cooper  
James Daubel  
Bill and Anne Gower  
Dan Groth and Frances Peters  
Andrea and Corky Hoffman  
Joanna Kennard  
Dr. Howard S. and Carol A. Kirshner  
Robert Lacey III  
Steve and Jo-Ann Leimberg  
Dr. Joe Marasco  
Donald and Sally McCarron  
Cynthia and William Merman  
Linda Merritt  
Wayne and Jean Middleton  
Don and Mary Miech  
Reinhold and Jennifer Preik  
Michael and Irene Sanchez  
John Stancin and Margaaret Bellucci  
Richard and Helen Tufaro  
Jonathan Wade  
Kevin and Lisa Webber  
Hugh and Ann Williams  
Cynthia Zarsky

## Crystal Nautilus \$500-\$999

Sonja Foster Allen  
Nancy Bartness  
Mike and Kathy Baxter  
Richard Beaty  
David and Betty Berkman  
David and Laurie Bowers  
Michael and Charlotte Bowling  
Sarah Hill Buck  
Richard and Patricia Campana  
Barbara Cardile  
Bill and Jane Casper  
Russell and Margaret Dancy  
Dr. George and Jean De Tarnowsky  
Walter and Gracia Drew  
John and Sandra Fulton  
John and Kate Giffin  
Janet D. Goldstein  
McDiarmid Gravely  
William and Melissa Hendrickson  
Howard Haims and Carole Cooper-Haims  
Corky and Andrea Hoffman  
Dr. Robert Joyce and Rebecca Joyce  
Adam Kaufman and Dee Torre Kaufman  
Mark and Donna Kaufman  
Stephen and Susan Kaye  
Dr. Walter Keenan

Beverly and Allen Kezbom  
Anthony and Peggy Kolasa  
Ken and Victoria Lanier  
Vincent Martorano  
Don and Mary Meich  
Dr. Frank and Janet Milliken  
David and Kathy Miller  
Kathleen Minder and Stephen Gessner  
Judy Raggi Moore  
Judy and David Ogden  
Anne and Ralph Oman  
Charles and Janet Plosser  
Fred Ragsdale and Jennifer Salisbury  
Steve and Nancy Rieck  
Blaine and Linda Rieke  
Sam Schwartz  
Ed and Vicki Segraves  
Dr. and Mrs. Gino Segre  
Carol C. Todd  
Theodora Vanderzalm  
Andrew and Diane Watson  
Klaus & Barb Wenger  
Wilby and Catherine Whitt  
Chip and Nancy Wood

## Friends of the Festival \$100--\$499

Hugh and Kathy Aberman  
Susan Alexander  
Virginia Ardia  
Berta Isabel Arias  
Lindsay and Katherine Arthur  
Edward Avra  
Ktimene and Michael Axetell  
David and Robyn Barrie  
David and Gloria Beeman  
Thomas and Connie Black  
Joanne Blalock  
Jerry Blancett  
Emma Mills Bledsoe  
Sarah Borns  
Charlotte and Mike Bowling  
Sonya Brabston  
Mary Brannon  
Ann and Larry Burns  
Brenda Carr  
Paul Clark  
Jack and Margaret Cooper  
John Cotner  
Kathy Davidson  
Don and Cathy DeCesare  
Sylvia Derrick  
Kathleen Devlin  
Bo and Diane Duffy  
Ronald Eash and Mary Rood  
Sarah Edwards  
Barry and Margie Efron  
Jess and Sharon Elliott  
Emily Farmer  
Virginia Feazell



## Sponsors & Contributors

Robert and Ann Freeman  
 Brad and Leanna Gallagher  
 Linda and Michael Gard  
 Beth-Ann Gentile  
 Fred and Patricia Gieg  
 Ann and Wendell Godbee  
 Daniel Gold  
 Louis and Susan Goldman  
 Jose Gonzales and Ana Diaz  
 Diana Gould  
 Raymond Halsey  
 Gordon and Rosemary Hart  
 Robert and Janet Hartig  
 Horst and Irmgard Hehmann  
 Stephen and Paula Heuser  
 Phyllis Hockett  
 Paul Hoffman  
 Barbara Hornick-Lockard  
 John and Gayle Howard  
 Peter and Ruth Igoe  
 Scott and Nancy Inboden  
 Linda Janca-Braatz and David Braatz  
 Susan and Anthony Jarzyna  
 Lorraine and Neil Johnson  
 Thomas and Loraine King  
 Ronald and Janet Kolar  
 Anthony and Peggy Kolasa  
 Linda Kurtz  
 David Lakari  
 Bronson and Paula Lamb  
 Kris Landers  
 Robert and Karen Lavine  
 James and Elizabeth Layman  
 Lisa Lee  
 Remberto Leiseca  
 Thomas Logan  
 Gary and Janice Long  
 Dr. Alan and Joellen Marks — In honor of Dr.  
 and Mrs. Robert Joyce  
 Lynne and Khrys McCordle  
 Richard McCormick  
 Tim McNamara, K.D. and Judy Whitaker  
 Timothy and Kathleen Meredith  
 Anna and Hays Mershon  
 Dave and Kathy Miller  
 James Miller

Timothy Miller  
 Moi and Cheryl Monroe  
 Louise Mozena  
 Susan Nelson  
 Steve and Michelle Nielson  
 Maureen Nussman  
 Tom Orr  
 Jeff Packer and Jane Sandhaus Packer  
 Len and Lynne Pelletier  
 Marvin and Lynette Perlis  
 Carolyn Phanstiel  
 Nancy Phillips  
 Stewart Pikula  
 Judith and Charles Pillans  
 Michael and Shelden Pisani  
 Charles and Janet Plosser  
 Cathy and Robert Randall  
 Robert and Elaine Reisner  
 Andre Rudzinski  
 Dr. and Mrs. Wilbur C. Rust  
 Paul Salter  
 Marie Santry  
 Karl and Margaret Schneider  
 Richard Seaman  
 Scott Secrest  
 Lee Sessions, Jr.  
 Buddy and Susan Sinor  
 Jonathan Slaughter  
 Clayton Smith  
 Clint Smith  
 Lloyd and Marie Smith  
 Peter Smith  
 Sarah Snell  
 — In honor of Dr. and Mrs. Lewis Thomas  
 Emmy Lou Sorum  
 George and Shirley Spaniel  
 Ed and Judy Stanley  
 Kenneth Stanley  
 Sheryl Starling  
 Zora Stevens  
 Mimi Stewart  
 Robert and Rose Stubbs  
 George and Nancy Sutherland  
 Bryan and Karen Tabler  
 Lian K. Tan  
 John and Julia Taylor

Dawn Theodore  
 Robert and Mireille Threlkel  
 Amy Tompkins  
 Louis and Joyce Tonti  
 Diana Ray Tope  
 Chris Walker  
 Linda Weltner  
 Tom and Constance Wiggins  
 Linda Wilkinson  
 Lawrence Williams and Mary Jane Johnson  
 Bibi and Jos Wolke  
 Dora Yelk

### Up to \$99

Rosalyn M. Abramson — In honor of Lois Gosa,  
 retired member of the Jacksonville Symphony  
 Anna Armstrong  
 John Coogan  
 Rosalind Cowie  
 Kristy Gang  
 Thomas Harper  
 Tom Hilton  
 Peter Howell  
 Faye Jackson  
 Yvette Janssen and Martin Ainbinder  
 James and Anne Kirk  
 Kerwin Mayers  
 Elton O'Byrne  
 Barbara Roberts



*Thanks all who help bring the  
 music alive year after year...*

## Legacy Giving

Our planned giving program and endowment, Foundation for the Future, enables music lovers to make an investment in the Festival's future, ensuring that we will continue to offer renowned performances and educational programs for generations to come. For more information, call 904-261-1779 or visit [www.aicmf.com](http://www.aicmf.com) and click on the Support tab.



# Our Volunteers

Thank you AICMF Volunteers! Your generous gift of time makes the presentation of a world-class chamber music festival possible.

Susan Alexander  
Barbara Alleva Gant  
Joan Averett  
Susan Barry  
Mike and Kathy Baxter  
Bill and Susie Birdsong  
Beverly Blake  
Emma Mills Bledsoe  
Andy Bogart  
Jon and Marilyn Bosworth  
Sam and Barbara Boyd  
Sue Braddock  
Charlene and Mitch Bratton  
Elizabeth Cantwell  
Peter Carter  
Jean Conner  
Linda Cooley  
Ken and Carol Copithorne  
Stan Cottle  
Gerry Custer  
Kathleen Devlin  
Mark and Susan Foutz  
Jacqui Galbreath  
Pam Helton  
Anne Taylor Hensley  
Judson and Mary Louise Hester  
Dot Houk  
Peter and Ruth Igoe  
Linda Janca  
Marsha Joyner  
Russ and Judy Kahoe  
Mark and Donna Paz Kaufman  
Nick and Lis Krawiecki  
Rob and Amy Laidlaw  
Robert and Karen Lavine  
Sharon Lennon  
Donna Lott  
Karen Lotz  
Sylvia Madiol  
Kyril and Susan Magg  
Peter and Jackie Martin  
Gail McCamy  
Don and Sally McCarron  
Jeannine McKeown  
Kathleen Minder  
Bruce and Jackie Modahl  
Eileen Shannon  
Ira Ruthellen Muhlberg  
Pat Murray  
Ellen Myers  
Jeanette Nichols  
Judy Ogden  
David Olson  
Jackie Piersanti  
Stewart Pikula  
Dorothy Robb  
Eric and Gail Sakurai

Irene Sanchez  
Tapha Sears  
Frances Shea  
Susan Sinor  
Ed and Judy Stanley  
Kay Stephens  
Rosemary Syczygiel  
Bryan and Karen Tabler  
Lou and Joyce Tonti  
Jerry and Mary Lynn Torchia  
Steven Traver  
Betty Waas  
Jack and Karen Weber  
Norman and Marilyn Wesley  
Catherine West  
Tom and Vicki Whittemore  
Steve Zebrasky

## Special Thanks

Amelia Park Neighborhood Association  
Art on Centre  
Dickie Anderson, The Porch  
Ktimene Axetell, Young Patrons core group  
Jennifer Bauer, Young Patrons core group  
Emma Mills Bledsoe,  
Strings Program piano teacher  
Caroline Blochlinger, website developer  
Bob Bolan, governance consultant  
Susan Dodge, Royal Amelia Dance Academy  
Lea Gallardo, photography  
Gary Hackney, Intracoastal Media Group  
Will Howery, luthier services  
Roslyn Hume, photography  
Phil Kelly, Amelia Islander Magazine  
Steve Leimberg, photography  
Tom Linley, TomStar Services, marketing and publicity  
Foy Maloy, Fernandina Beach News-Leader  
Kurt Marasco, IT consultant  
Jack Melvin, Keyboard Connection  
Karen Miller, writer  
Kim Rust, Digital Village, Graphic Design  
Omni Amelia Island Plantation  
Walt Petersen, photography  
Lynne Radcliff, master class support  
Penny Reid, Mouth of Amelia  
Ritz-Carlton Amelia Island  
Sue Sinor, grant writer  
Lauren Templeton, Young Patrons core group and Instagram  
Shelby Trevor, Strings Program violin teacher  
UPS Store, Fernandina Beach  
The Violin Shop, instrument appraisal services  
Catherine West, grant writer  
Vicki Whittemore, ticket sales management  
Trang Wiest, Young Patrons core group  
Suzanne Wolke, Facebook  
Chris Yarborough, Intracoastal Media Group

## Our Housing Partners

Omni Amelia Island Plantation  
Ritz-Carlton Amelia Island  
Victor & Linda Bilanchone  
Emma Mills Bledsoe  
Sue Braddock  
Jim & Jane Flynn  
Barbara Alleva Gant and Donald R. Gant  
Louis and Susan Goldman  
Anne Taylor Hensley  
Bill Hensley  
Lou & Susan Goldman  
Steve & Jackie Kennard  
Christopher Rex & Dr. Martha Wilkins

## Our Leadership Team

### General & Artistic Director

Christopher Rex

### Executive Director Emeritus

Dr. Joseph Marasco

### Executive Board

Emma Mills Bledsoe, President  
Irene Sanchez, Vice President  
Sue Braddock, Secretary  
Kathleen Minder, Treasurer

### Board Members At Large

Barbara Alleva Gant  
Sharon Lennon  
Tom Pippin  
Vicki Whittemore  
Hugh Williams

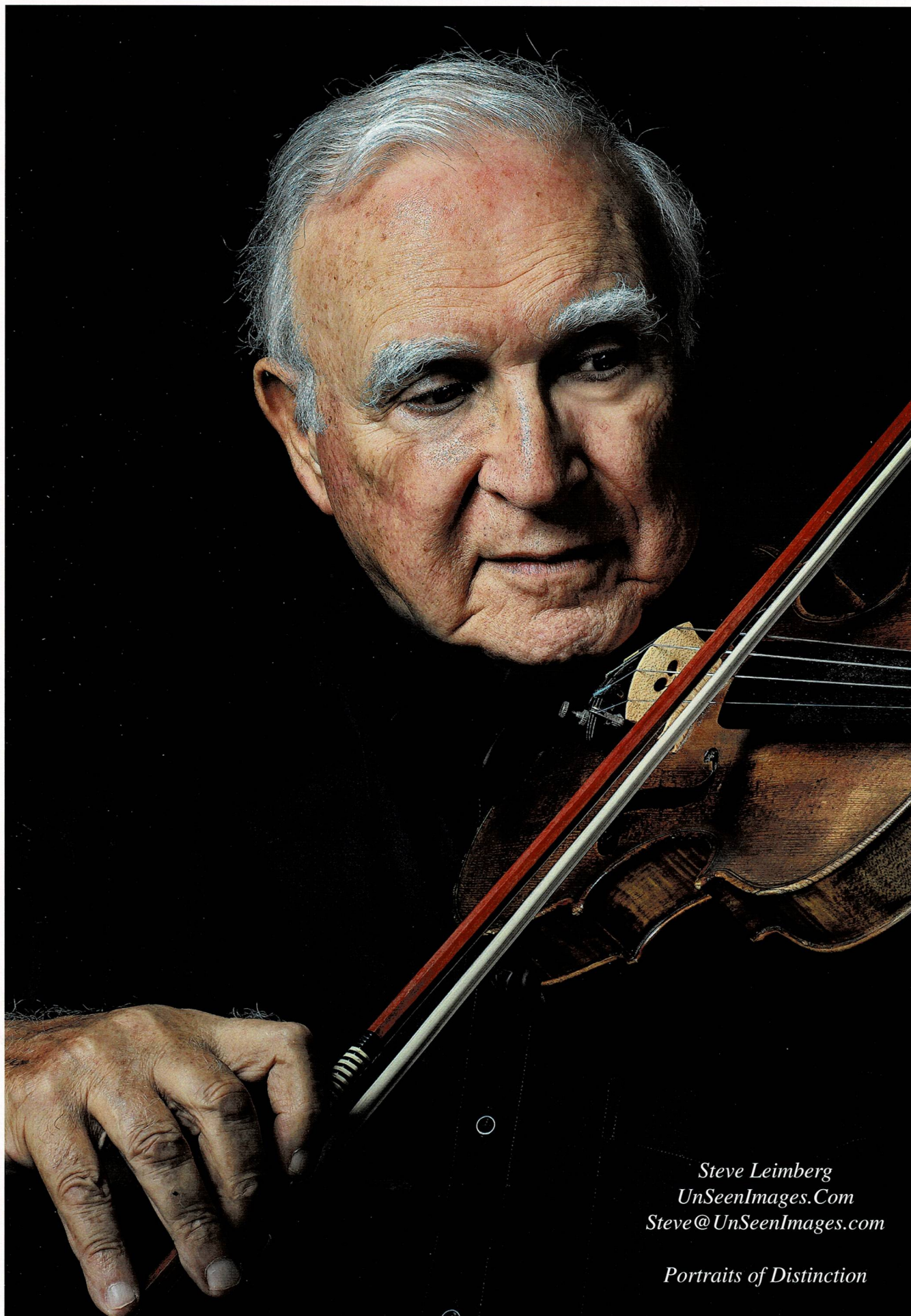
### Staff

Eric Sakurai, Executive Director  
Donna Hinton, Office Manager

## Speakers Bureau

Our Speakers Bureau provides information to community groups about the Festival's development into one of the nation's foremost musical events. We also explore the Judeo-Christian roots of Western music with an emphasis on chamber music. For more information and to schedule a speaker, call 904-261-1779.

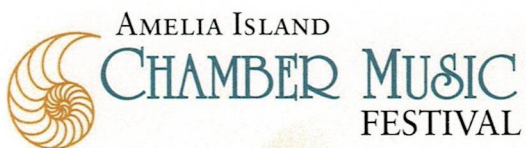




Steve Leimberg  
UnSeenImages.Com  
Steve@UnSeenImages.com

*Portraits of Distinction*





Amelia Island Chamber Music Festival  
P.O. Box 15886  
Fernandina Beach, FL 32035  
[www.aicmf.com](http://www.aicmf.com)

## *Amelia Island Chamber Music Festival's Mission*

*Present the world's greatest musical artists in chamber music concerts of classical and alternative genres for diverse audiences.*

*Offer music education to concert attendees, students, and aspiring young musicians.*

*Promote local businesses and tourism by attracting music lovers from Nassau County, northeast Florida, and beyond.*

**Tickets at [www.aicmf.com](http://www.aicmf.com)  
or 904-261-1779**